

Luke Schlosser, Designated Broker Phone: (623) 882-8880  
Fax: (623) 882-8881 Email: swland@cox.net  
Charles Havranek, Agent Phone: (623) 877-5180  
Fax: (623) 877-1443 Email: ch@chzhavranek.com

Exclusively Presented By:



**SOUTHWEST  
LAND  
ASSOCIATES, L.L.C.**

## Tonopah Farm Available

### Tonopah, Arizona

Location: NEC & SEC 419<sup>th</sup> Avenue  
& Indian School Rd., Tonopah, Arizona

Size: Approximately 357.961 +/- ac.

Tax Parcel #'s: 506-34-007A, 007B,  
039A, 039B, 042, 045A, 045B, 046

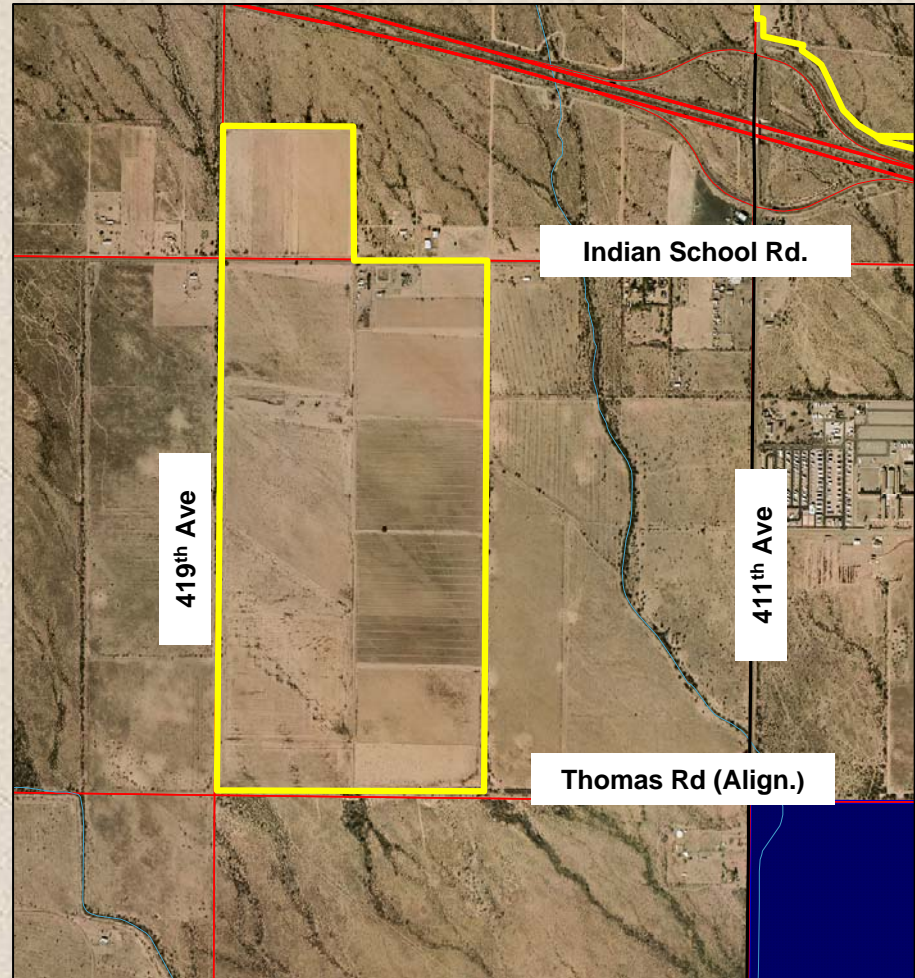
Price: \$2,500,000 (\$7,000 / acre)

Terms: Seller will consider terms.

Zoning: RU-43, Maricopa County

Comments: **SUBMIT ALL OFFERS!**

Further information gladly provided  
upon request



P.O. Box 5700 Goodyear, AZ 85338 Phone: (623) 882-8880 Fax: (623) 882-8881 Website: [www.southwestlandassociates.com](http://www.southwestlandassociates.com)

*This information is subject to change at any time. This information is from sources deemed reliable. We have no reason to doubt its accuracy but do not guarantee it. It is the responsibility of the person reviewing this information to verify it.*

TP0077

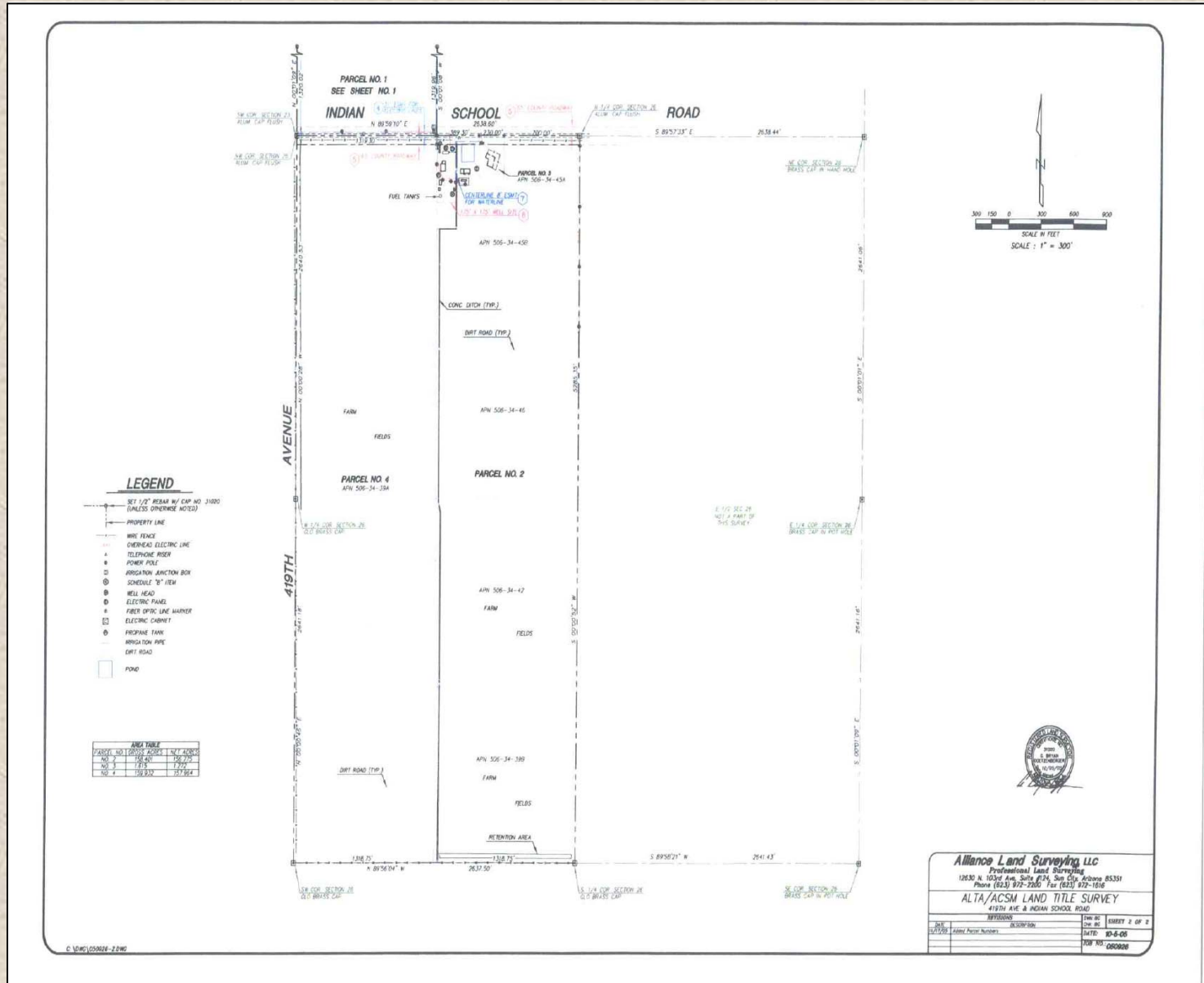


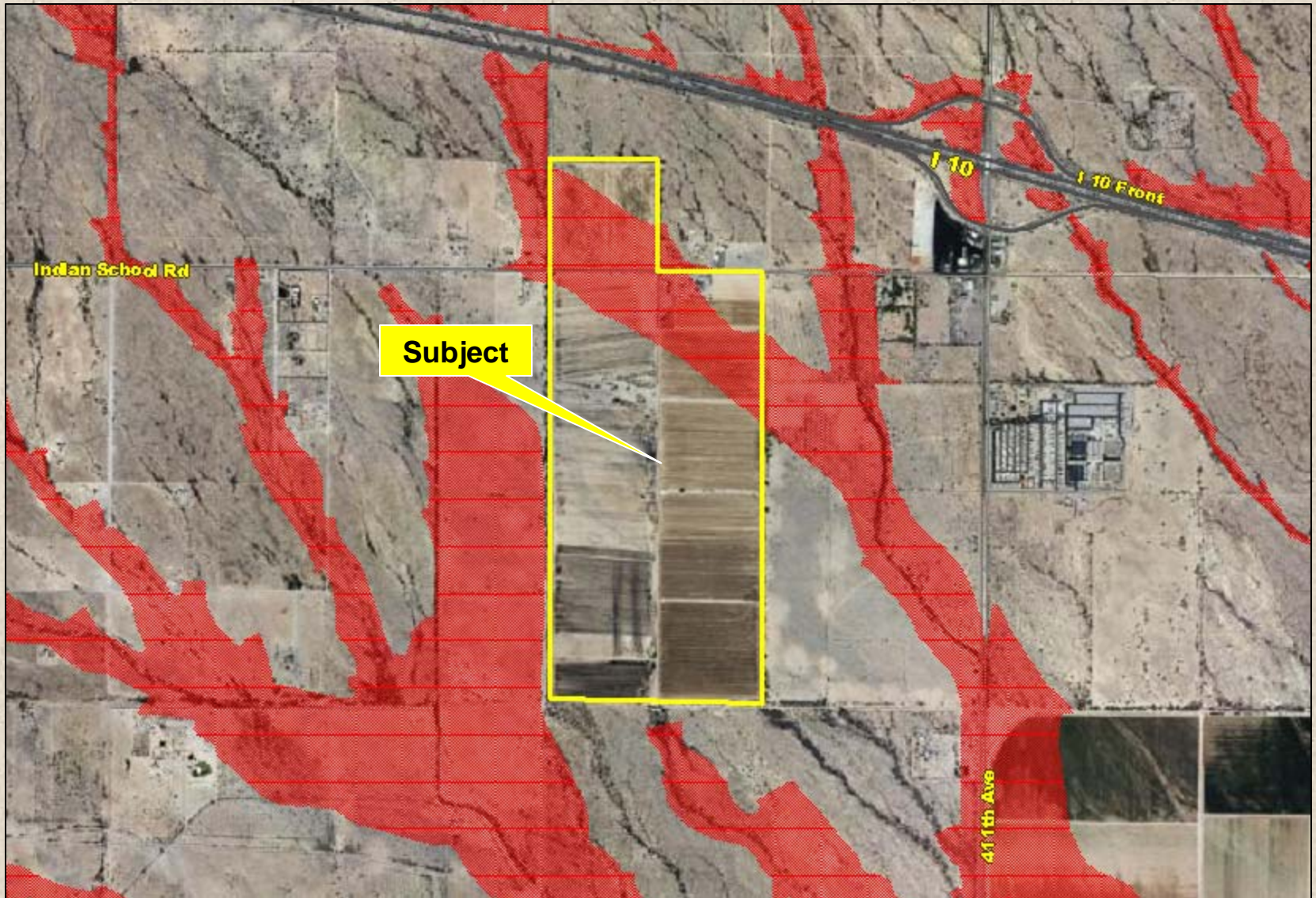
# Tonopah Farms











**Pending Floodplain Map**